

# GALLERY AFERRO

## *Elevator Music 6: Janétza Miranda*

Curated by Juno Zago



Janétza Miranda

**Feb 22 - Mar 28, 2020**  
**Gallery Aferro Elevator Installation**  
**73 Market Street, Newark**

### **OPENING RECEPTION**

February 22nd, 2020  
7pm - 10pm

### **GALLERY HOURS**

Wednesday - Saturday  
12pm - 6pm  
and by appointment

## *Elevator Music 6: Janétza Miranda*

Curated by Juno Zago

Elevator Music is a continuous rotation of experimental sound art curated for the permanent Elevator Music installation on the second floor of Gallery Aferro. The installation is comprised of a very early Otis Elevator (single digit) from the early 1900s excavated from the basement of Gallery Aferro's facilities at 73 Market Street. The Elevator was cleaned up, refurbished and equipped with a motion sensor-activated media player. Guests enter the elevator and the audio-works are activated, analogous to the ways we may enter a functioning elevator ready to deliver us to our desired (or undesired) destination.

Elevator Music is a space where audio works can become accessible within a visual arts gallery experience. Over the years the installation has taken on many forms, from musical mix-tapes to experimental "studio sounds." Currently in its fifth iteration, entering Elevator Music brings the viewer to a new, personal space to listen and reflect on alternative forms of creative expression.

[www.aferro.org](http://www.aferro.org) | [www.aferrostudios.org](http://www.aferrostudios.org)  
73 Market Street, Newark, NJ | 973.353.9533  
Wed - Sat 12-6pm

## Visit

73 Market Street, Newark, NJ  
Wednesday - Saturday 12-6pm  
and by appointment.  
aferro.org  
aferrostudios.org

## Contact

973 353 9533  
info@aferro.org

Gallery Aferro  
Ironbound Station  
PO Box 5668  
Newark, NJ 07105  
USA

## Mission

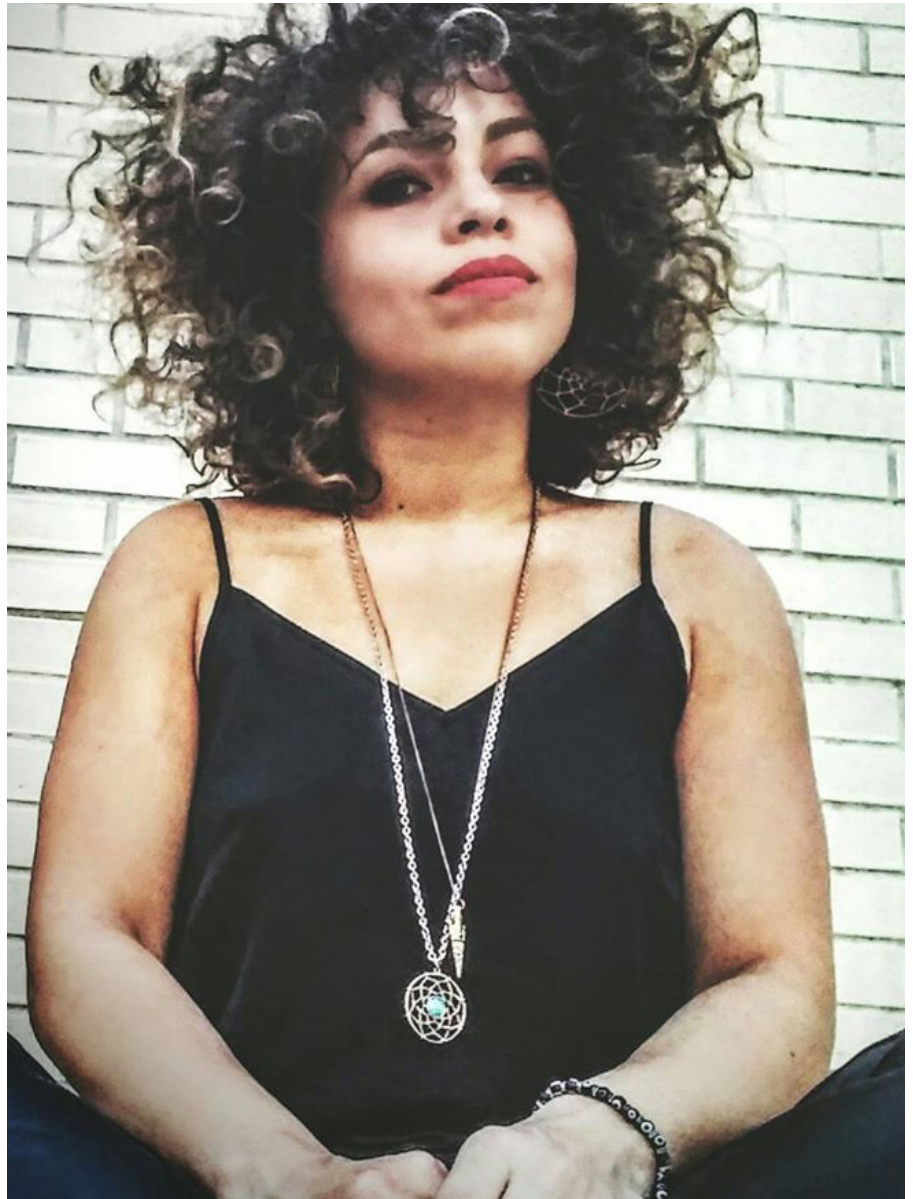
The mission of Gallery Aferro is to function as a platform for the exchange of ideas in service of advancing human dignity and beauty, with a focus on visual arts as the vehicle, proudly located in Newark, NJ.

## Accessing The Gallery

Gallery hours are listed above, come by for a visit! Gallery Aferro is a street level store front gallery and is wheelchair accessible. If you need special assistance, requests, or desire additional information about accessibility, please email our ADA Coordinator, Candace Nicholson, at [cnicholson@aferro.org](mailto:cnicholson@aferro.org). We believe art is absolutely for everyone and are very happy to accommodate anyone's needs but please give us 1 weeks notice for any arrangements that will need to be made at the gallery. If you require large print press materials please let us know 48 hours ahead of time.

## Sponsors

We gratefully acknowledge the support of our funders, sponsors and the individual donors who make our programs possible. The Geraldine R. Dodge Foundation, The New Jersey State Council on the Arts/ Department of State, a Partner Agency of the National Endowment for the Arts, and RBH Group.



Janétza Miranda

*Elevator Music 6: Janétza Miranda*, curated by Juno Zago, invites visitors to step inside an early-1900s refurbished Otis Elevator and experience the sophisticated sounds of the songwriting chanteuse of the Ironbound.

Hailing from Newark, New Jersey, Miranda's work is inspired by her Puerto Rican roots, projecting a vibrant range of colors melding sounds of jazz, blues, boleros, plena y bomba, and Flamenco. Miranda loves to fuse together the music that excites her with her favorite songs of yesterday and today.

You can often find her performing on her classical Spanish guitar, weaving together melodies that you would never think could coexist. She has appeared on NBC's *The Voice*, performed in the Americando Expo in Milan, Italy, and continues to tour around the world.

